

CHOPPER ADVANCE

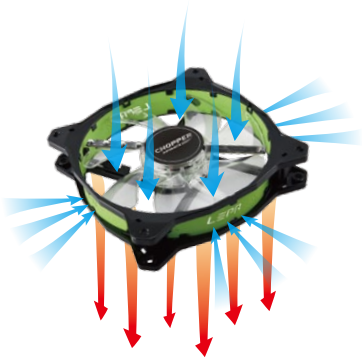


Create your own style

Product Features

- Patented modular frame with LEPA logo halo ring design to increase 30% airflow
- Unique quad-ring LED pattern creates 30 different lighting effects
- Dynamic lighting mode to meet your visual desire
- PWM speed control for the perfect balance between performance and silence
- Patented Barometric Oilless (BOL) bearing for long lifespan and silent spinning
- Removable fan blade for convenient cleaning

Patented Modular Frame

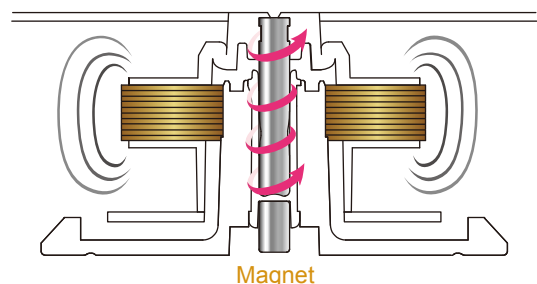


The special halo ring frame structure allows the fan to generate 30% more airflow and the color of the customized ring design matches the LED color of each model.

Patented Barometric Oilless (BOL) Bearing

Long lifespan, silent spinning

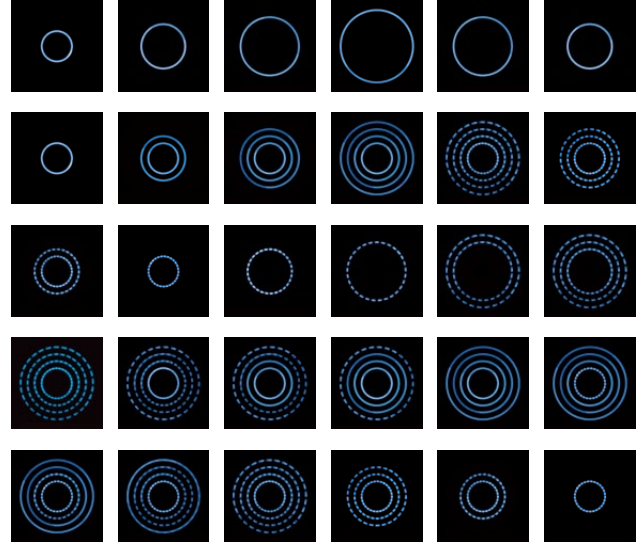
Patented BOL with Nano technology features minimal friction operation, so it is quieter than traditional 2 ball-bearing. The special Nano materials intentionally used for high working temperature, with MTBF \geq 160,000 hours.



Unique Quad-Ring LED



Harnessing an advanced LED driver IC, CHOPPER ADVANCE presents a brilliant quad-ring pattern which can fashion 30 different kinds of lighting effects.



4 Color Options

CHOPPER ADVANCE is an ideal case fan for case modding with 4 colors available: BLUE, RED, GREEN, and WHITE.



Removable Fan Blades



One click to disassemble the fan blades and frame for convenient cleaning.

Product Specifications

Model Name	LPCPA12P
Dimension (mm)	120 x 120 x 25
Speed (RPM)	600 ~ 1500
Air Flow (CFM)	29.48 ~ 70.38
Air Flow (m ³ /h)	50.09 ~ 119.58
Static Pressure (mm-H ₂ O)	0.432 ~ 1.833
Minimal Noise (dBA)	8 ~ 20
Rated Voltage (V)	12
Input Current (A)	0.20
Input Power (W)	2.4
LED Color	Blue / Red / Green / White
LED Quantity	4
LED Effects	Dynamic effect
Bearing Type	BOL (Barometric Oilless) bearing
MTBF	≥160,000 hours @ 25° C
Connector	1 x 4 pin connector ; 1 x 4 pin fan power adaptor

Shipping Information

Model		LPCPA12P-BL	LPCPA12P-R	LPCPA12P-G	LPCPA12P-W
Barcode	EAN	4710445321559	4710445321566	4710445321573	4710445321580
	UPC	847407001557	847407001564	847407001571	847407001588
Box Dimension		120 x 182 x 28 mm			
Gross weight / unit		0.19 kg			
Carton Dimension		490 (L) x 340 (W) x 260 (H) mm			
Qty / carton		60 pcs			
Gross weight / Carton		12.0 kg			

